

## THE GLOBAL STAGE



### Services Provided

Bridges, Roads, Tunnels, Seismic Design, Transportation Planning, Urban and Regional Planning, Environment, Information Technology, Civic Design, Railways, Construction Management and Supervision, River and Erosion Control, Ports, Airports, PFI, Facility Maintenance, and Sewerage

### Overseas Projects

We provide engineering services for infrastructure development in many developing countries. We aim at achieving infrastructure that is in harmony with the surrounding environment and is also economical.



*Xinxiang to Zhengzhou Expressway Construction Project,  
China*



*"Friendship Bridge II" (Mekong River)  
International Bridge Construction Project,  
Lao PDR and Thailand*



## ORIENTAL CONSULTANTS COMPANY LIMITED

*-CONSULTING ENGINEERS-*

16-28, Nanpeidai-Cho, Shibuya-Ku, Tokyo, 150-0036, Japan

Telephone: +81-3-6311-7570

E-mail: [intl@oriconsul.co.jp](mailto:intl@oriconsul.co.jp)

Facsimile: +81-3-6311-8020

Web Site: <http://www.oriconsul.co.jp>



## Retrieval of Cultural Landscape Koga Park, Japan



### The 2003 UNESCO Melina Mercouri International Prize Award winner for the first time in Japan - The Park of Koga

The purpose of the Melina Mercouri International Prize is to reward outstanding examples of action to safeguard and enhance the world's major cultural landscapes. It is named after Melina Mercouri, a precursor in the field of integrated conservation and sustainable development, a memorable actress and former Minister of Culture in Greece. The prize was awarded for the first time on 2 November 1999 and since then is presented every two years, by UNESCO.

The Park of Koga was initially motivated by the people in



Koga City for the retrieval of old tales and landscapes with the indispensable donation and volunteer activities. CTI Engineering Co., Ltd has contributed as a primary consultant to implement the detailed design of the Park. Especially, the effects in designing the retrieval of waterfront, cohabitation spaces with nature, walkway in the Park and various bridges result in the prize winner with the full consideration of various social and technological aspects as a leading think tank.



#### **CTI ENGINEERING CO., LTD.**

Hama-cho F Tower 3-21-1. Nihonbashi-Hamacho Chuo-ku, Tokyo 103-8430 Phone: +81-3-3668-0451

[http : // www.ctie.co.jp/](http://www.ctie.co.jp/)

**Quality Water.  
Quality Life.**



<http://www.nissuicon.co.jp>

**Creating Clean Water Environment.**



**Nihon Suido Consultants Co., Ltd.**

**HEAD OFFICE**

22-1, Nishi-Shinjuku 6-Chome Shinjuku-ku, Tokyo 163-1122, Japan  
PHONE: +81-3-5323-6260 FAX: +81-3-5323-6487

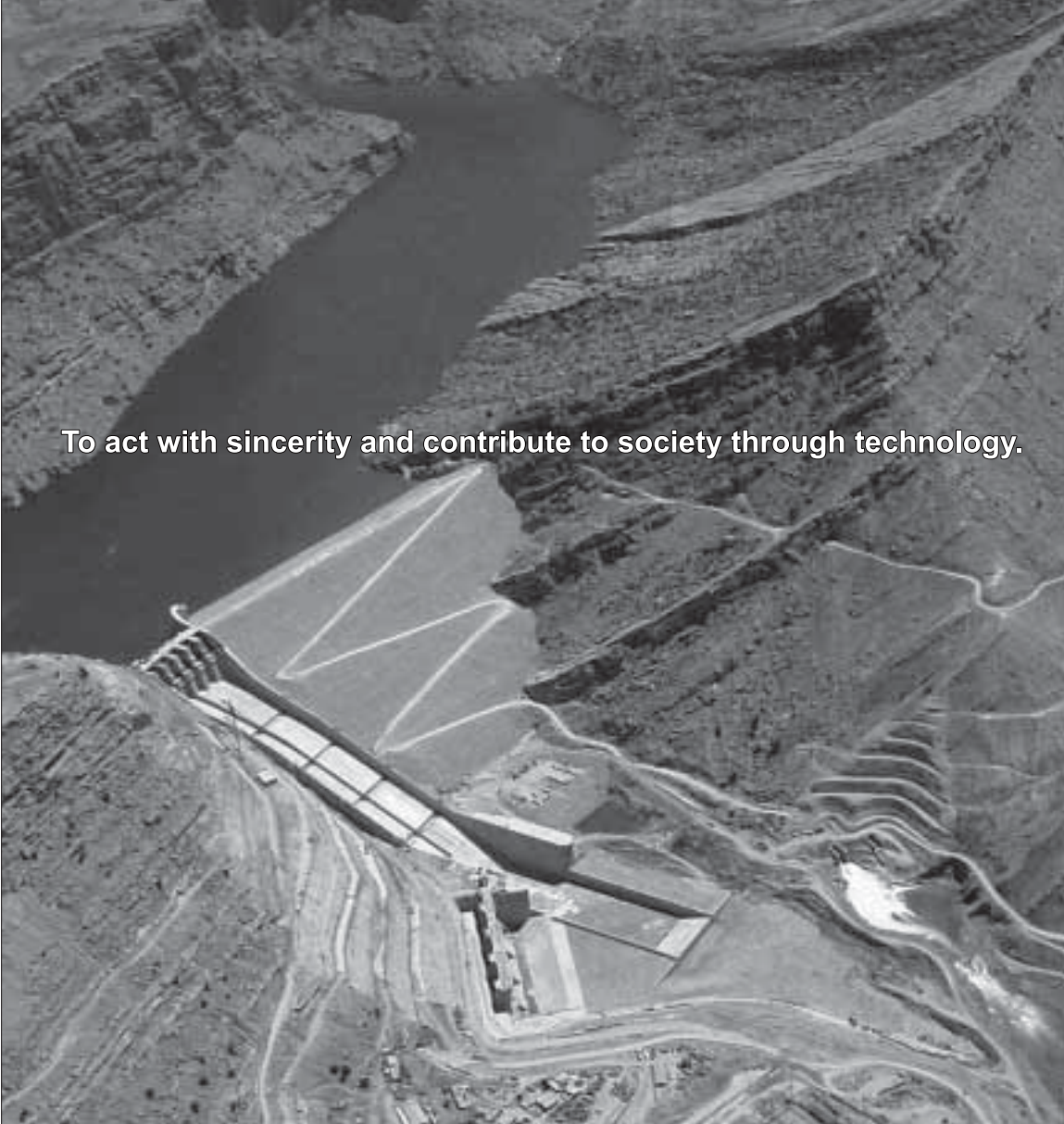
**OVERSEAS OFFICE**

JAKARTA, INDONESIA PHONE: +62-21-5744441  
BANGKOK, THAILAND PHONE: +66-2-9817336





***NIPPON KOEI***  
*Challenging mind, Changing dynamics*



To act with sincerity and contribute to society through technology.

**NIPPON KOEI CO.,LTD.**

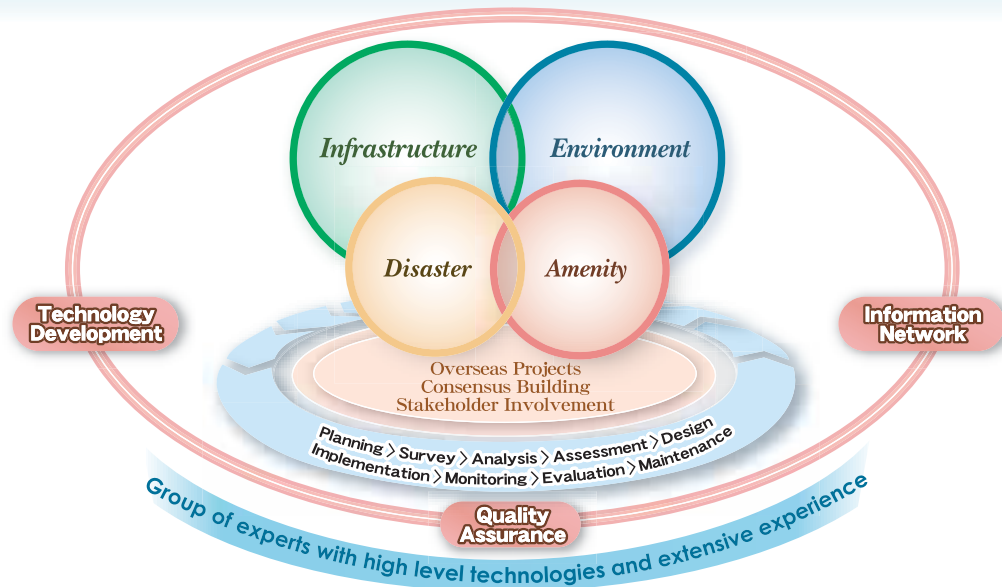
4 Kojimachi 5-chome, Chiyoda-ku, Tokyo 102-8539, Japan Telephone:+81-3-3238-8030 Facsimile:+81-3-3238-8326

**Overseas Consulting Administration**

2 Kojimachi 4-chome, Chiyoda-ku, Tokyo 102-0083, Japan Telephone:+81-3-5276-3252 Facsimile:+81-3-5276-3002

<http://www.n-koei.co.jp> e-mail:[int.a@gx.n-koei.co.jp](mailto:int.a@gx.n-koei.co.jp)

**“We Support the sustainable development of a safe and sound society.”**  
**“We Support the conservation and inheritance of a healthy and productive environment.”**



**IDEA Consultants, Inc.**  
 Infrastructure, Disaster, Environment, Amenity  
<http://ideacon.jp/en/>

**Head Office**  
 3-15-1, Komazawa, Setagaya-ku, Tokyo 1548585, Japan  
**Tokyo Branch**  
 Shin-onarimon Bldg. 4F, 6-17-19, Shinbashi, Minato-ku, Tokyo 1050004, Japan

TEL: +81 (3) 4544-7600  
 TEL: +81 (3) 5405-3700

Water Resources Study in Cambodia



Microcosm Study in Turkey



Water Quality Monitoring in Panama



# It's our pride

## that our technology supports the earth.

Our competences are

- Disaster Risk Assessment/Management
- Water Resources Development
- Environmental Investigation/Evaluation
- Geotechnical Services



**OYO INTERNATIONAL CORPORATION**

Bokubansha Kyodo Bldg. 10, 6 Bokubansha, Chiyoda-ku, Tokyo 102-0085, Japan

TEL: +81-3-3211-5181 FAX: +81-3-3211-5186 E-mail: oyo@ooyointernational.com



Over 37 Years Experience  
in  
Cable Supported Bridges

Nhat Tan Bridge  
(Red River, Hanoi, VIETNAM)



■ Head Office: 1-28-4, Nishinbashu-Kaigansho, Chuo-ku, Tokyo 103-8014 JAPAN Tel.03-3639-3301, Fax.03-3639-3366  
URL: <http://www.chodai.co.jp>, Email: [info@chodai.co.jp](mailto:info@chodai.co.jp)

Over 40 Years Experience in Consulting Services



**THE JAPAN ELECTRICAL CONSULTING CO., LTD.**

**on Electrical Expertise for Transport Engineering**

#### **SPECIALIZATIONS**

Railway, Subways, Rapid Transit, Light-Rail Transit and Monorails;  
Roads and Highways; and Airports.

#### **SERVICES**

**PRE-PROJECT PLANNING:** Project identification, Pre-investment studies, Feasibility studies and assessments, and Project appraisal.

**PROJECT SUPPORT:** Environmental impact studies, Site evaluation and Technical surveys.

**PROJECT PREPARATION:** Sketches and pre-designs, Technical appraisals and advice, Detailed designs, Tender documents preparation and bid evaluation.

**CONSTRUCTION IMPLEMENTATION:** Construction management, Field engineering, Project management, and Site supervision.

**POST CONSTRUCTION:** Commissioning and Training.

**For further information please contact:**

Mitsunori SHIBUYA

Senior Executive Officer/Manager, Overseas Department

Tel: +81-3-3836-1021 Fax: +81-3-3834-2769 Email: [jec-kaigai@jec-info.co.jp](mailto:jec-kaigai@jec-info.co.jp)

HEAD OFFICE: 23-14, Ueno 5-chome, Taito-ku, Tokyo 110-0005, Japan

Tec



## ***Towards the Creation of a Safe and Sound Water Environment....***

Applied to all offices consulting services / ISO 9001:2000 ISO 14001:2004

### **TOKYO ENGINEERING CONSULTANTS CO., LTD.**

President HIROSHI KAMEDA

#### **Head Office**

Fuji Bldg., 3-7-4 Kasumigaseki, Chiyoda-ku, Tokyo 100-0013, Japan  
Telephone : 81-3-3580-2418 Facsimile : 81-3-3591-0492

<http://www.iijnet.or.jp/tec-jimu/>



*For spreading better and safe life all over the world*

### **What do we do?**

- Highways & Bridges • Transportation • Water Supply & Water Resources Development
- Environmental & Waste Management • Electric Power & Telecommunications
- River, Flood Control & Natural Disaster Prevention • Architecture
- Urban & Regional Development • Information Technology



### **Yachiyo Engineering Co., Ltd.**

Consulting Engineers & Architects

• Address: 2-18-12, Nishiochiai, Shinjuku-ku, Tokyo, 161-8575, Japan

#### Head Office

#### International Division

• Tel: +81-3-5906-0700

+81-3-5906-0211

• Fax: +81-3-5906-0111

+81-3-5906-0112

• HP: <http://www.yachiyo-eng.co.jp>

• E-mail: [intl@yachiyo-eng.co.jp](mailto:intl@yachiyo-eng.co.jp)

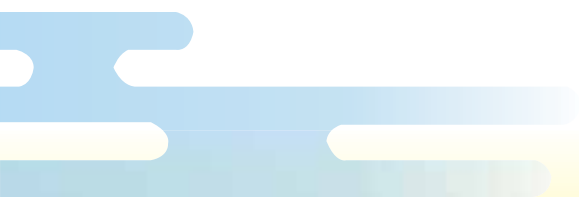
• Overseas Offices: Jakarta, Yogyakarta, Makassar, Kuala Lumpur,  
Phnom Penh, Kolkata, Cairo, Jordan, Guatemala,  
Sao Paulo,





FIDIC Member Association

<http://www.ajce.or.jp>



3-16-4, Ueno Taito-ku, Tokyo 110-0005 JAPAN TEL +81-3-3839-8471 FAX +81-3-3839-8472



info@ajce.or.jp